

E-bar Conveyor Belt Vulcanizer



NO.1 INTRODUCTION OF CONVEYOR BELT VULCANIZER

Heavyweight Sectional Conveyor Belt Vulcanizer With E Type Cross Bar

Conveyor Belt Vulcanizer is widely used in port, mine, milling factory, power plant, cement company., etc, it's used to repair and splice conveyor belt, such as EP belt, Steel cord belt, etc. The SVP type conveyor belt vulcanizer from arphu is the preferred heavyweight sectional vulcanizing press. Offering portability and great size versatility for coverage of all splice lengths, whether fabric, EP or steel cord belt. These presses disassemble into individual components for ease of transport and maneuverability when splicing in limited space or remote locations. Components are lightweight and easy to assemble. The modular design also allows for an increase in splice length or belt width by adding another section.

NO.2 TECHNICAL PARAMETERS

1. Working Pressure: 0.7-1.5 MPa (100 psi to 220 psi) and custom design for your special need;
2. Vulcanization temperature: 145° C or as per actual requirement;
3. Difference in surface temperature of vulcanized plate: $\pm 3^{\circ}$ C;
4. Heating up time (from normal temperature to 145° C)<30 minutes;
5. Voltage: 220V/ 380V/415V/440V/480V/550V/660V, 50/60Hz; custom designed to voltage phase and cycle;
6. Temperature Controller adjustment range: 0 to 199° C;
7. Timer adjustment range: 0 to 99 minutes.



SUZHOU ARPHU INDUSTRIAL CO., LTD

NO. 38 YANGSHE TOWN, ZHANGJIAGANG CITY, JIANGSU, CHINA

Model	Belt width (mm)	Specification	Size of heating plate (L×W×T) mm	Power KW	Dimension (L×W×H)mm	Weight KG
DLCBV-650	650	650×830	883×820×31	10.8	1140×883×585	440
		650×1000	1064×820×31	13	1140×1064×585	530
DLCBV-800	800	800×830	883×995×31	12.7	1320×883×585	515
		800×1000	1064×995×31	15.4	1320×1064×585	630
DLCBV-1000	1000	1000×830	883×1228×31	15	1450×883×585	600
		1000×1000	1064×1228×31	18	1450×1064×585	715
DLCBV-1200	1200	1200×830	883×1431×31	18.2	1700×883×750	800
		1200×1000	1064×1431×31	22	1700×1064×750	912
DLCBV-1400	1400	1400×830	883×1653×31	20.6	1950×883×750	885
		1400×1000	1064×1653×31	24.6	1950×1064×750	1050
DLCBV-1600	1600	1600×830	883×1867×31	22.8	2150×883×795	1130
		1600×1000	1064×1867×31	27.2	2150×1064×795	1325
DLCBV-1800	1800	1800×830	883×2079×31	25	2380×883×900	1420
		1800×1000	1064×2079×31	30	2380×1064×900	1630
DLCBV-2000	2000	2000×830	883×2303×31	27.4	2620×883×980	1560
		2000×1000	1064×2303×31	33	2620×1064×980	1824
DLCBV-2200	2200	2200×830	883×2478×31	29.8	2883×883×980	1720
		2200×1000	1064×2478×31	35.8	2883×1064×980	2030
DLCBV-2400	2400	2400×830	883×2680*31	32.3	2940×883×980	1880
		2400×1000	1064*2680*31	38.9	2940×1064×980	2236

NO.3 MAIN PARTS OF CONVEYOR BELT VULCANIZER

HEATING PLATENS

Lightweight, portable, pressure and temperature uniformity;

Each sectional press is constructed with aluminum flexible platens that contour to the conveyor belt surface during splicing;

Platens are individually designed and include BUILT-IN cooling system, and BUILT-IN temperature sensor;

Sturdy and shock-proof plug and sockets to enhance vulcanizing press durability.

CROSS BARS

Bars are available in various profiles and lengths and height to provide a custom solution for your needs;

Bars are specially designed by aviation aluminum alloy and manufactured out of quality extruded



aluminum alloy;

Various bolt and nut styles complement each bar type and provide a secure, pressurized splice.

PRESSURE/COOLING

Pneumatic or water pressure up to 1.5 MPa or 220 psi;

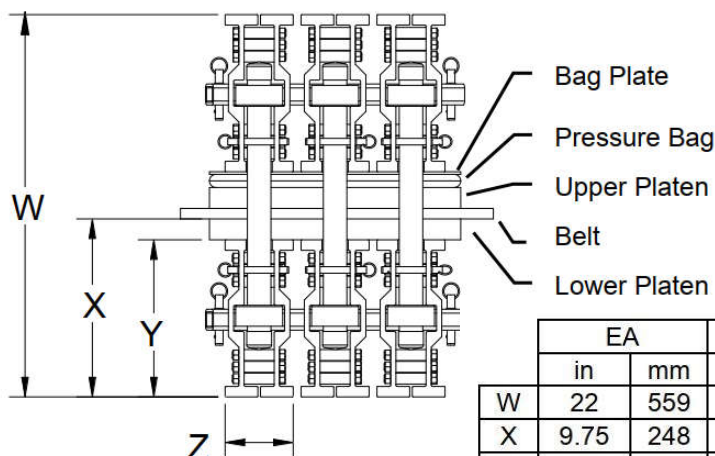
Cooling time within 10 mins from 145° C to 60° C.

SUITABLE PUMPS: Manual pump and Electric pump for your preferred chosen.

The pumps include gauges for fluid level and pressure

Extra reservoirs can be easily added for larger presses

Cooling options are also available.



	EA		EAX		EB		EC		E381	
	in	mm	in	mm	in	mm	in	mm	in	mm
W	22	559	27.5	699	32.5	826	32.5	826	36.5	927
X	9.75	248	12.5	318	15	381	15	381	17	432
Y	7.75	197	10.5	267	13	330	13	330	15	381
Z	7	178	7	178	6	152	6.5	165	6.5	165

NO.4 QUICK TIPS

1 inch=25.4 mm;

1 MPa=10 bars=145 psi;

NO.5 DIY FOR CONVEYOR BELT VULCANIZER

1. **WATER COOLING SYSTEM** (less than 10 minutes to cool from 145°C to normal temperature) or **NATURAL COOLING SYSTEM** (more than 2 hours to cool from 145°C to normal temperature);

2. **ELECTRIC PUMP** or **MANUAL PUMP**; if choose **ELECTRIC PUMP**, please advise voltage, such as **380V 50HZ 3 Phases**;

3. **Standard Control Cabinet or PLC Touch Screen Control Cabinet;**

NO.6 WHEN INQUIRY, PLEASE ADVISE THE FOLLOWING QUESTIONS:

1. Belt width, belt material (such as EP, NN or ST) and splicing length (joint length);
2. Voltage, such as 380V 50HZ 3 Phases;
3. Electric pump or manual pump;
4. standard (automatic) control cabinet or PLC touch screen control cabinet.

NO.7 Water Cooling Conveyor Belt Vulcanizer

Feature: Rapid integral cooling fitted on both plates, belt vulcanizer could be dismantled within 5~10 minutes.

NO.8 MODULAR CONVEYOR BELT VULCANIZER

Modular conveyor belt vulcanizer can be applied to Belt width 3200 mm maximum. Special design and production service is offered as per requirements of clients.

CONFIGURATION OPTIONS

